

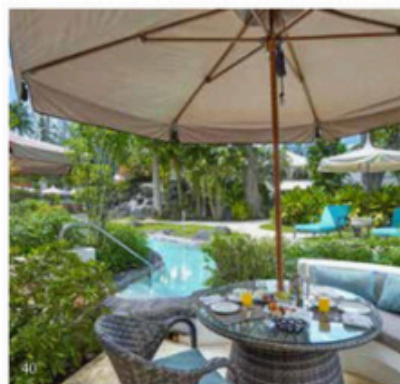
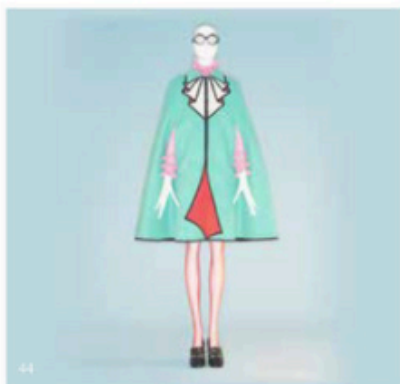
Waterfront

Delivered to elite homes, businesses & airport VIP lounges

Issue 132

CULTURE
FASHION
TRAVEL
ELITE PROPERTY
MOTORING
INTERIORS
SOCIETY
FINANCE

CHESHIRE · CHESTER · MANCHESTER · MERSEYSIDE · WIRRAL · CANARY WHARF



CONTENTS

Features

22 *Luna Cinema*
Catch the newest blockbusters and cinematic classics at breathtaking open air venues UK-wide

26 *May as Well*
We round-up the diary dates to relax, enjoy and be seen at this spring

30 *The Wilde Side*
We dine like true New Yorkers at this stylish, Oscar Wilde inspired restaurant

36 *Fresh Flavours*
The Titanic Hotel Liverpool has launched its delicious spring menu

42 *Savage Garden*
Spectacular views of the London skyline plus cheeky cocktails and quirky food – we check out this new rooftop playground

44 *Camp Out*
Sure to be one to watch, this year's Met Gala explores 'camp's influence on fashion

Fashion and Shopping

14 *Mint Condition*
Not one for making a loud statement? Take the tone down a notch with cool pastels

18 *Fringe Benefits*
Shake your fashion thing with tassels and fringing that just beg to be swooshed

20 *The Great Outdoors*
When the sun shines there's only one thing for it – grab your shades and blanket and picnic in style

Travel & Lifestyle

24 *High Standards*
Hayley Leaver discovers what to expect from London's newest 'hotel-living' property

40 *Join the Club*
The Colony Club is our destination of choice for dining and relaxation in Barbados

46 *Bay Watch*
St Lucia's Marigot Bay Resort and Marina is a slice of picture perfect luxury

Sports & Motoring

32 *Wheeler Dealers*
Classic car renovators are missing out on the market boom

34 *Liverpool International Tennis Tournament 2019*
Tennis stars will once again be centre court in Liverpool this June

38 *Race Time*
The Six Day Series in Manchester delivers heart-stopping action in the velodrome

60 *2019 Range Rover Evoque*
The original SUV has had an upgrade – and it's still the best in class

Regulars

8 A Note From the Team
10 Grooming Wish List
12 Beauty Wish List
28 Objects of Desire
50 Elite Property Portfolio



ROLEX

THE DATEJUST

The archetype of the modern watch has spanned generations since 1945 with its enduring functions and aesthetics. It doesn't just tell time. It tells history.



OYSTER PERPETUAL DATEJUST 36

Mappin & Webb

LONDON

12-14 ST ANN STREET, MANCHESTER
32 EASTGATE ROW SOUTH, CHESTER
MAPPINANDWEBB.COM

WATCH FEATURED SUBJECT TO STOCK AVAILABILITY

high STANDARDS



As London's skyline welcomes its newest arrival, Hayley Leaver talks to the team behind the eagerly awaited The Stratford Hotel and Lofts

Scheduled to open in May, The Stratford Hotel and Lofts (at Manhattan Loft Gardens) look set to signal a new era of hotel living in the capital, uniting short-term hotel guests and long-term Londoners under one roof in a dynamic vertical community.

The latest project from Manhattan Loft Corporation, the London property pioneers and team behind the St Pancras Renaissance Hotel and Chiltern Firehouse, sees them team up with Skidmore, Owings & Merrill LLP (SOM), the architects behind the world's most iconic skyscrapers, the Burj Khalifa and

One World Trade Centre.

The result, as you'd expect, is impressive and sees the 42-storey Manhattan Loft Gardens, a spectacular double-cantilevered tower, arrive in east London's Queen Elizabeth Park, bringing with it expansive living spaces, three sky gardens, two restaurants and a design hotel.

Manhattan Loft Corporation Founder and CEO, Harry Handelsman said: "Picture the perfect 21st century hotel, what do you see? Impeccable facilities, immaculate service and a great location are all vital. But it needs that unique pulse those famous Manhattan hotels

had, like The Carlyle, the Chelsea. A club, meeting place, hotel and home that never treats you like you're ordinary".

In The Stratford Hotel and Lofts, the Manhattan Loft Corporation hopes to bring together just that – world-class hospitality, architecture and art for a new generation in what's emerging to be London's largest cultural district – the Zaha Hadid-designed London Stadium and Aquatic Centre, Sadler's Wells, the V&A, and state-of-the-art Madison Square Garden's Sphere music venue will be just a few of its neighbours.

Mr Handelsman said: "Visitors at The Stratford Hotel and Lofts can expect a new era of hotel living in London, inspired by the timeless glamour of 1950s New York's legendary long-stay hotels. London is a great city and great cities need not only great people and great ideas, but fantastic buildings. A city like London helps to inspire a project as ambitious as Manhattan Loft Gardens."

Occupying the first six floors, The Stratford will be a 145-room luxury hotel with interiors by Space Copenhagen, the designers behind the legendary NOMA and 11 Howard in New York. Highlights will include its seventh-floor Allegra destination restaurant by the former Chiltern Firehouse head chef, Patrick Powell, and the ground-floor Stratford Brasserie by Ben Harrington, formerly of Soho House Group.

Visitors can also enjoy a cultural agenda of exclusive performances, installations and cultural events, including live music, lifestyle and fitness events. One of the partnerships already in place will see fitness concept ConBody, the New York craze that works with reformed characters, create unique high intensity workouts for guests of the hotel.

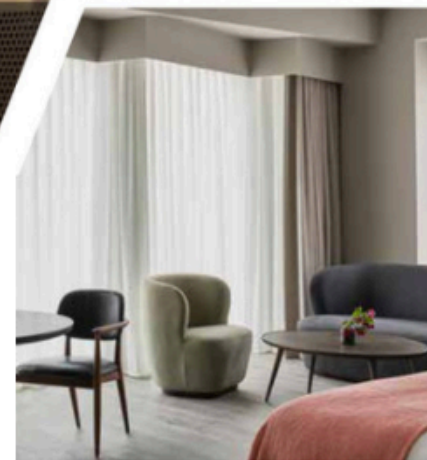
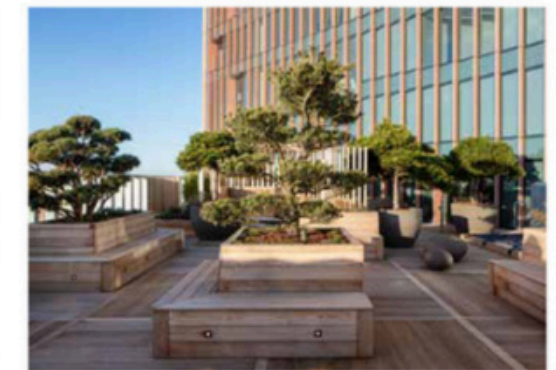
For guests wanting an extended stay – and with all this to choose from, who can blame them? – The Stratford Lofts can accommodate them for weeks, months, or even years. A collection of 248 single and double-height loft apartments, they offer residents panoramic views of the London skyline, as well as access to three sky gardens, hosting daily yoga and dining, and the 24-hour hotel concierge service, which includes everything from dog walking and grocery stocking to 24-hour room service.

Not only is the Manhattan Loft Gardens unique in its multi-faceted design, it also sees the Manhattan Loft Corporation, which has built a reputation on starting the regeneration of now established areas in London, take a break from reviving some of London's most beautiful buildings in favour of creating one of their own.

Mr Handelsman said: "Working closely with SOM's Design Director, Kent Jackson, has been a joy, and the engineering team has done an incredible job. Architecture and development is something I'm passionate about. And sometimes that passion can be present in old refurbishment or a new build. What I don't like is to work on a project that doesn't excite me."

He concluded: "Manhattan Loft Gardens is spectacular in its appearance and once occupied it will be a spectacular place to be living. There is nothing else quite like it."

For more information on The Stratford visit www.thestratford.com.



"Great cities need not only great people and great ideas, but fantastic buildings."

