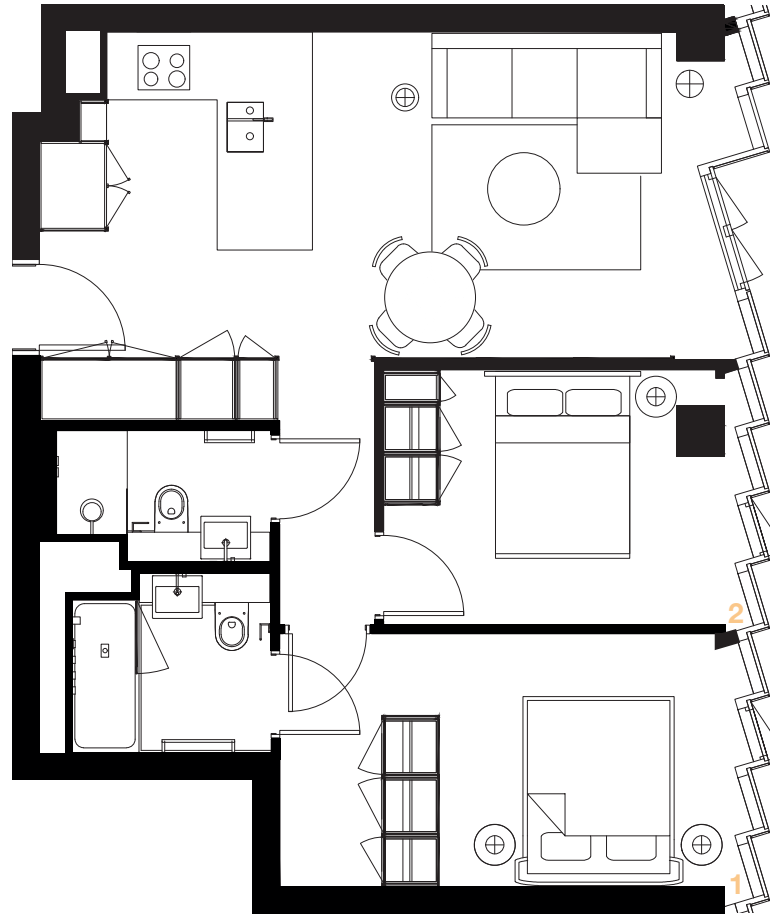


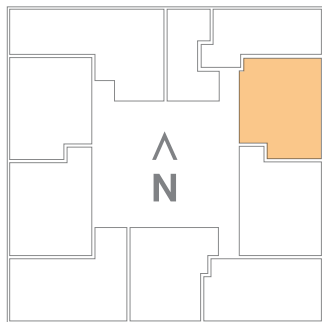
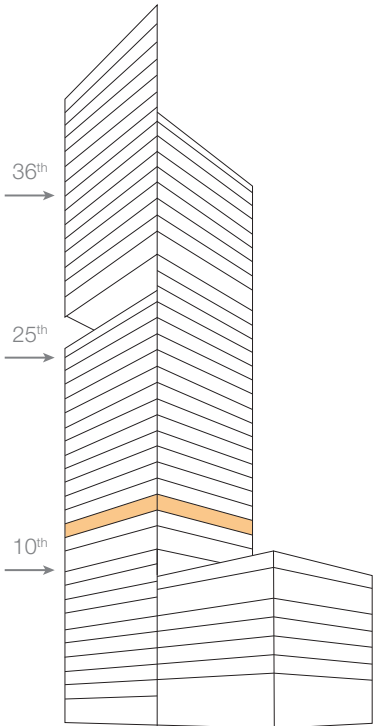
1203

Two Bedroom Loft

Level 12
68.5 sq m
(737 sq ft)



Epping Forest
Low Rise Residential



Description

Spacious fully furnished two bedroom loft with open-plan kitchen, breakfast bar, living and dining area, two large double bedrooms, bathroom and additional shower room. East facing views.

Rooms

Dimensions (approximate)

| | | |
|------------------------|-------------|-----------------|
| Living Room & Kitchen: | 7.6m X 3.5m | (24'9" x 11'5") |
| Bedroom 1: | 5m X 2.8m | (16'4" x 9'2") |
| Bedroom 2: | 3.8m X 2.8m | (12'5" x 9'2") |

The information (including all CGIs, photographs and plans) contained in this brochure are intended to give a general impression of the homes referred to in it and should not be relied upon as accurate or specific. The dimensions are approximate only and may vary. Some details may have changed since printing due to the continually updated improvement of design features. While the developers Manhattan Loft Gardens Ltd ("MLG") and its agent Creative Property (UK) LLP ("CP") have endeavoured to ensure the accuracy of the information provided, they cannot accept any liability for any errors, misprints or omissions in the particulars or any loss arising from the use of or action taken from such information. Please check with the developers or its agent regarding all aspects of importance to you and seek appropriate legal advice. MLG and CP give notice that: (1) the particulars set out in this brochure are produced in good faith and are intended to be used as a general guide only and do not constitute part of any offer or contract; and (2) no person in the employment of MLG or CP or their associated companies or other agents has any authority to make or give any representation or warranty whatsoever in relation to this property and this brochure does not constitute a representation or warranty and must not be relied upon as such. Issue date: May 2018

